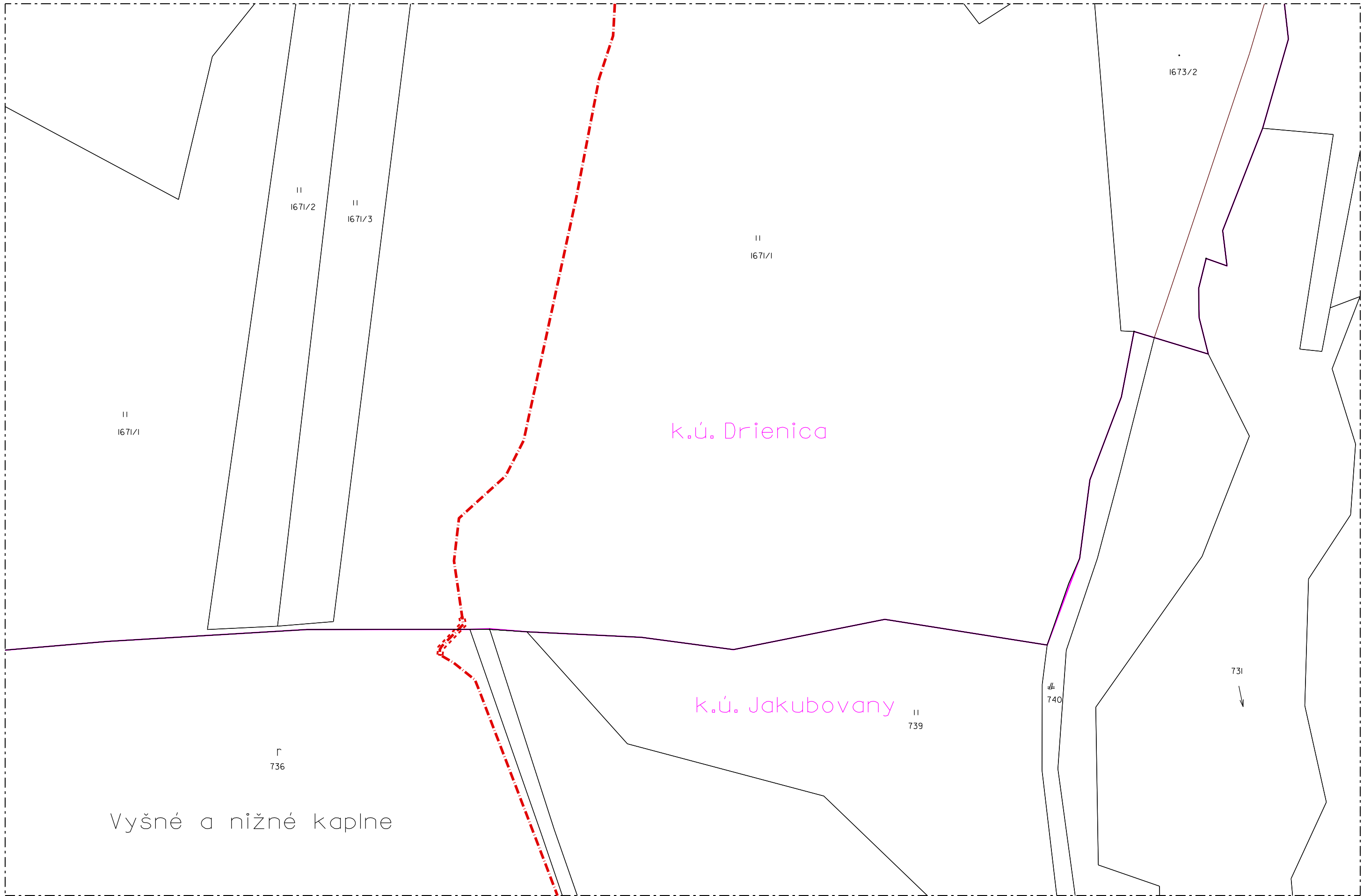




N.65



k.ú. Drienica

k.ú. Jakobovany

Vyšné a nižné kaplné

N.63

731
↓

II
740

II
739

I
736

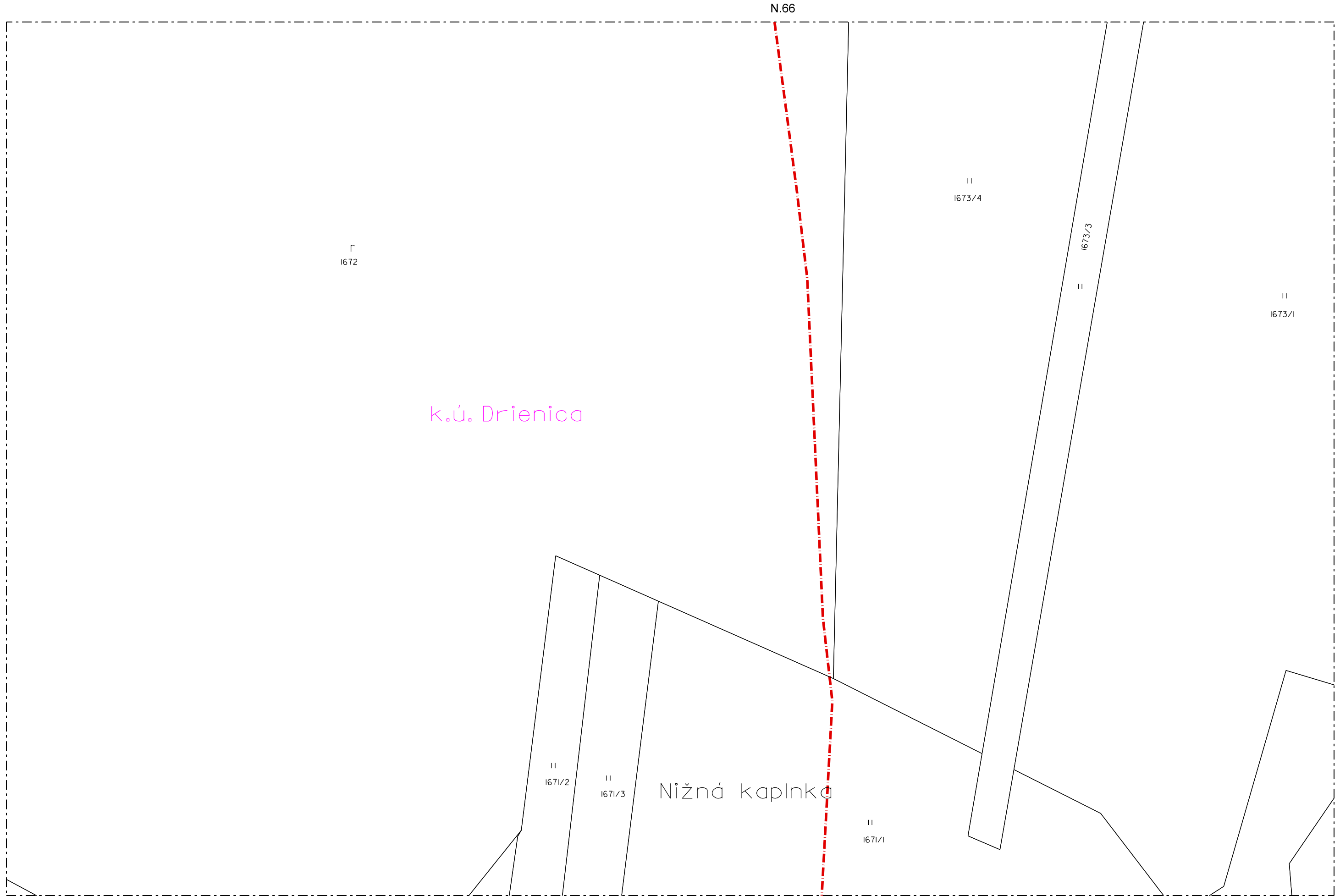
II
1671/1

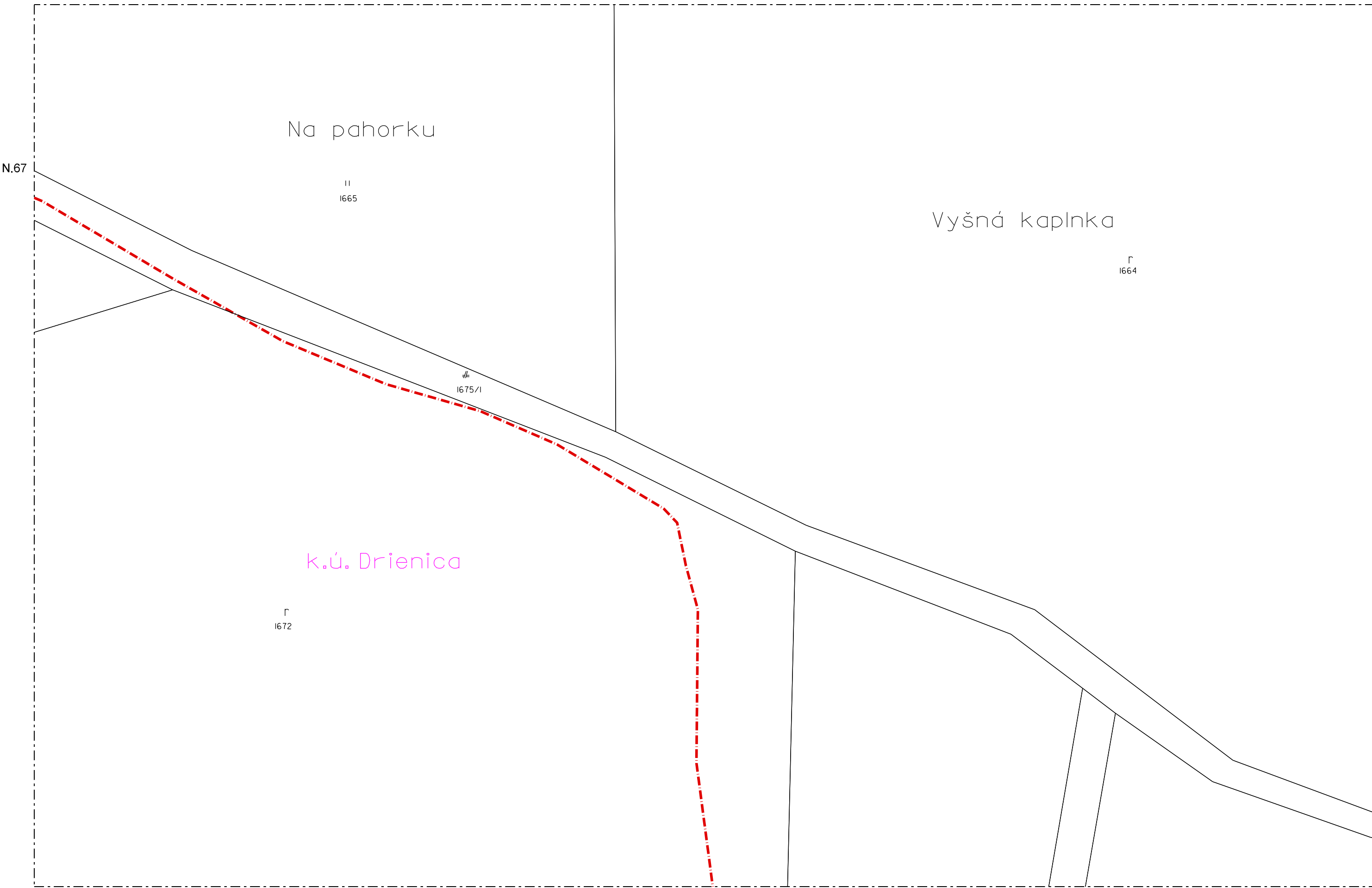
II
1671/2

II
1671/3

II
1671/1

II
1673/2





N.67

Na pahorku

II
1665

Vyšná kaplnka

I
1664

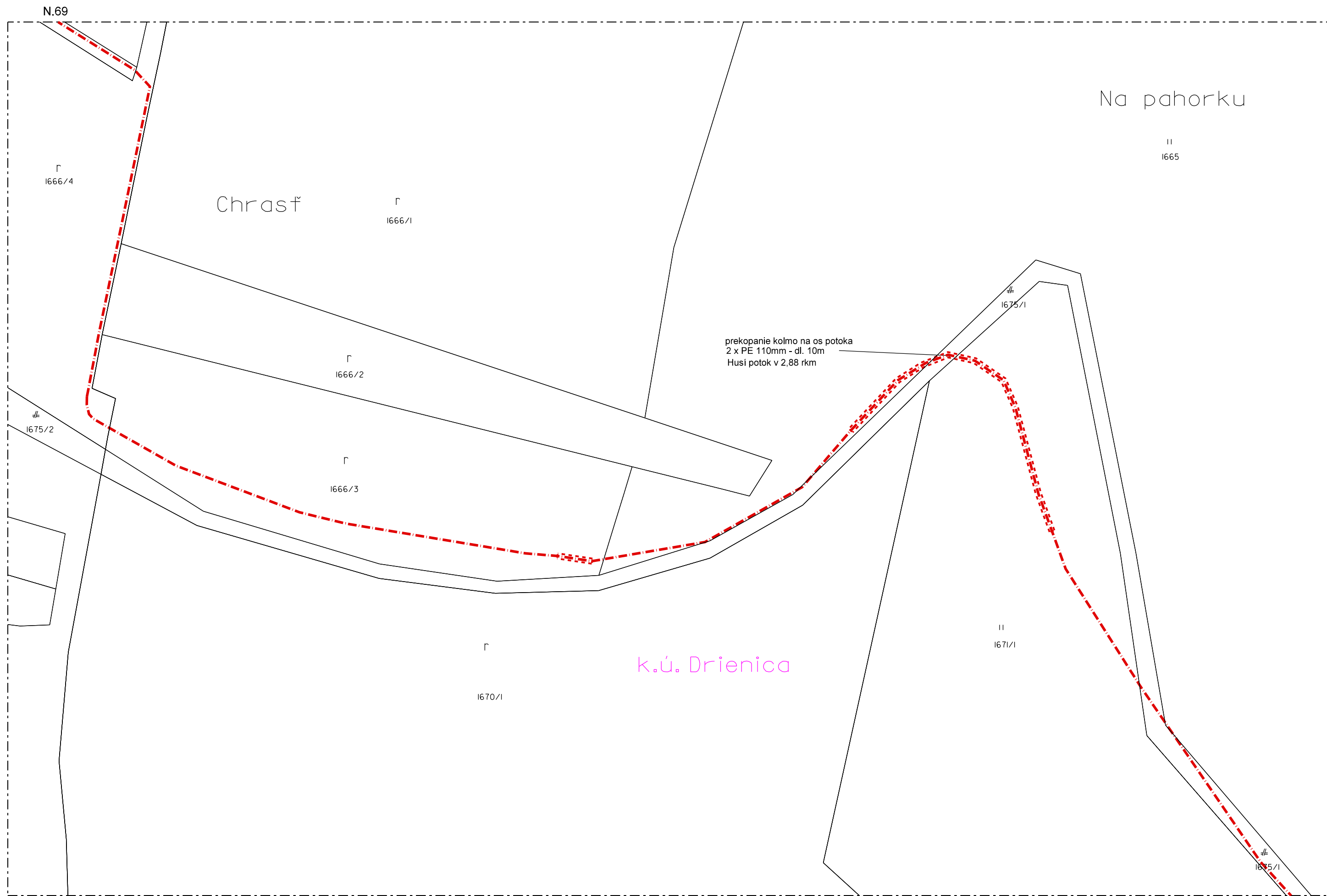
I#
1675/1

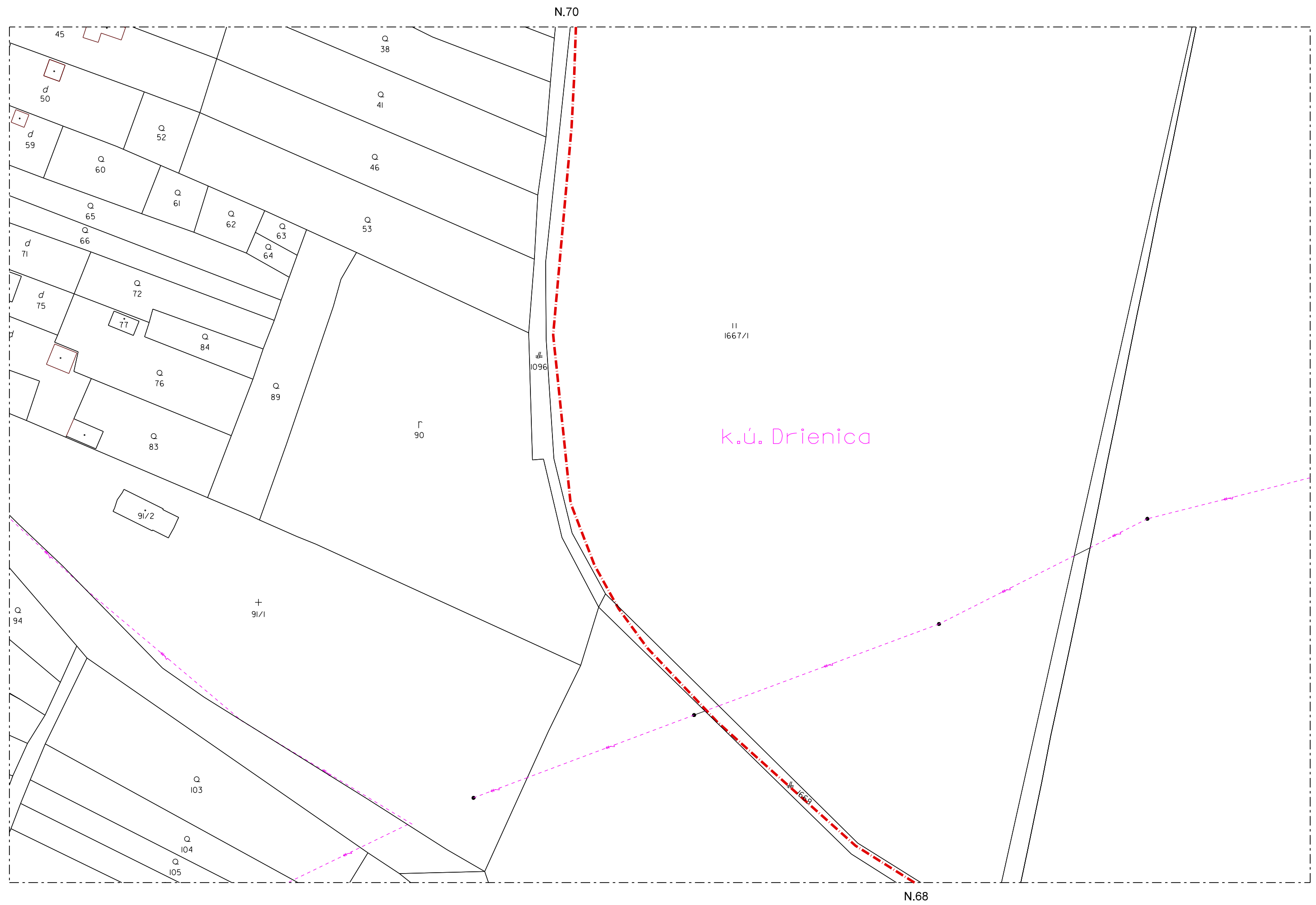
k.ú. Drienica

I
1672

N.65

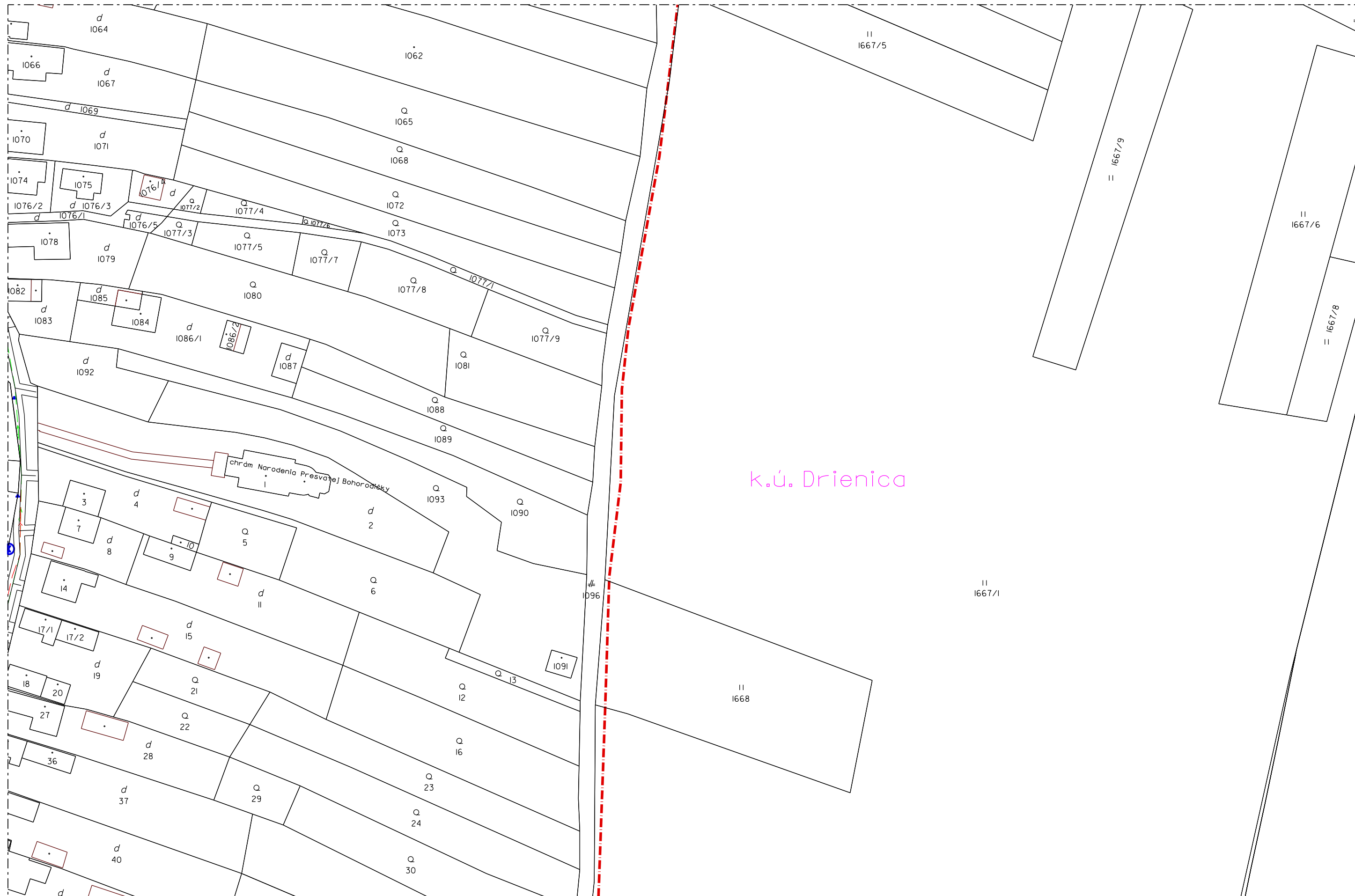




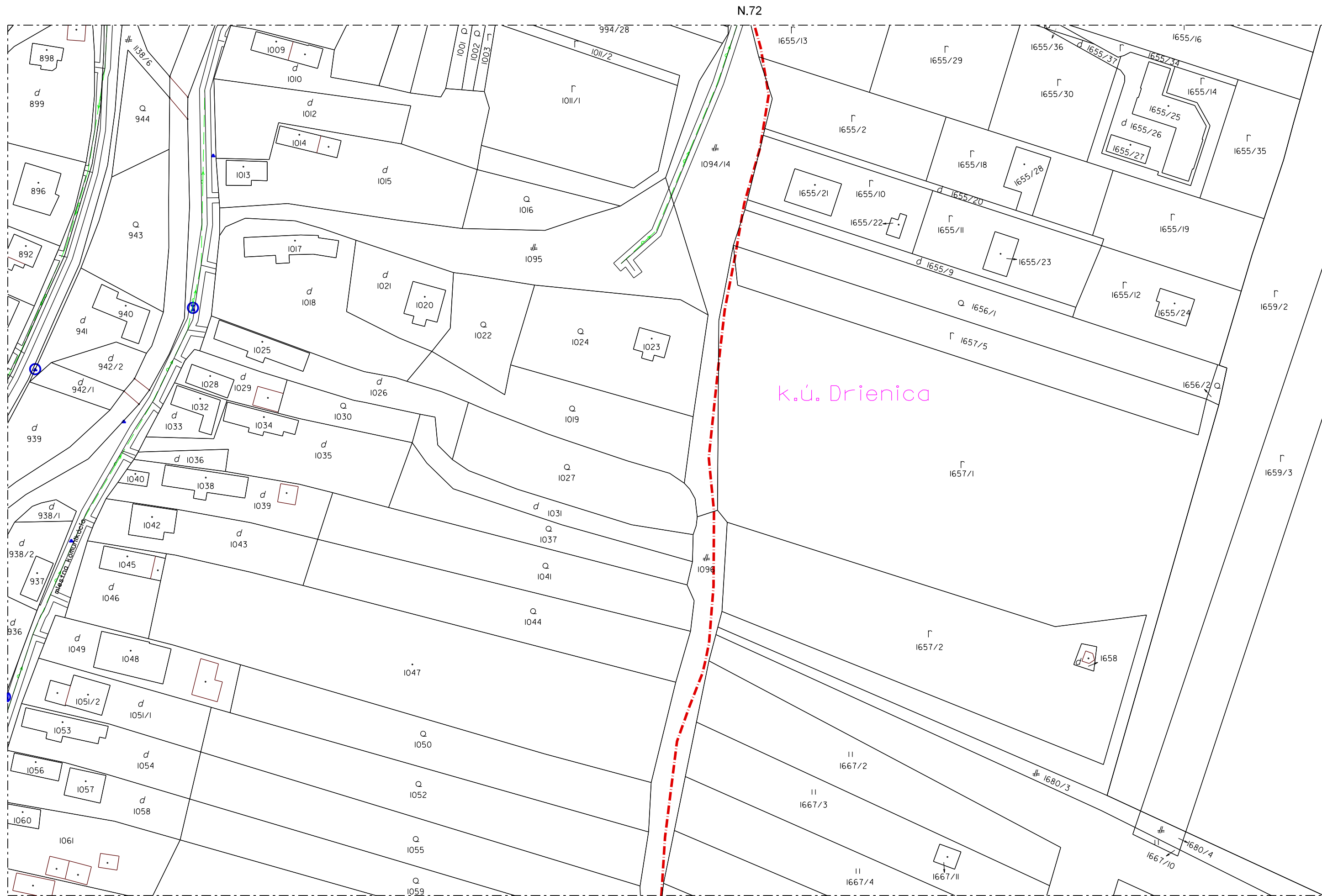




N.71

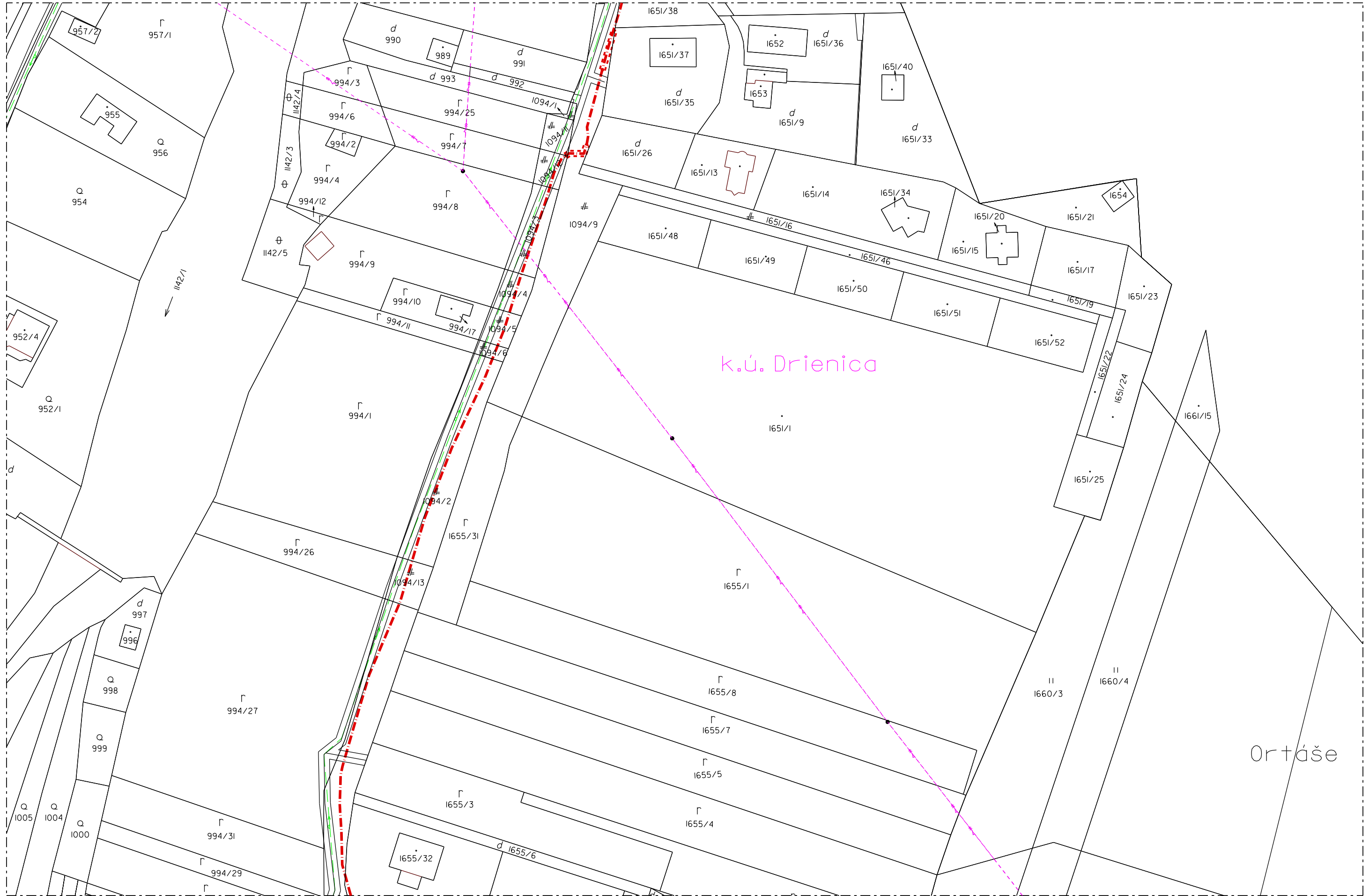


N.69





N.73



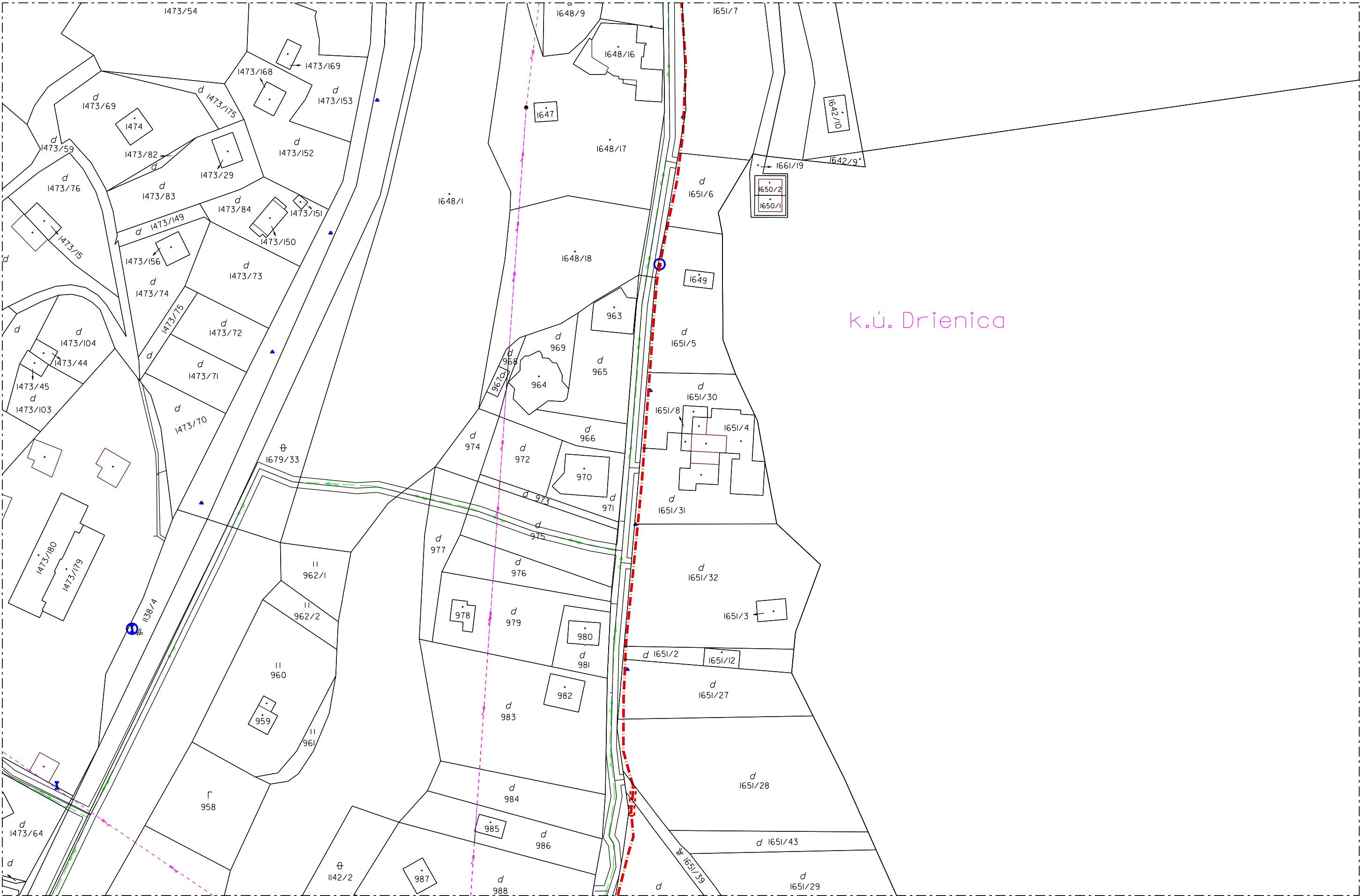
k.ú. Drienica

Ortáše

N.71



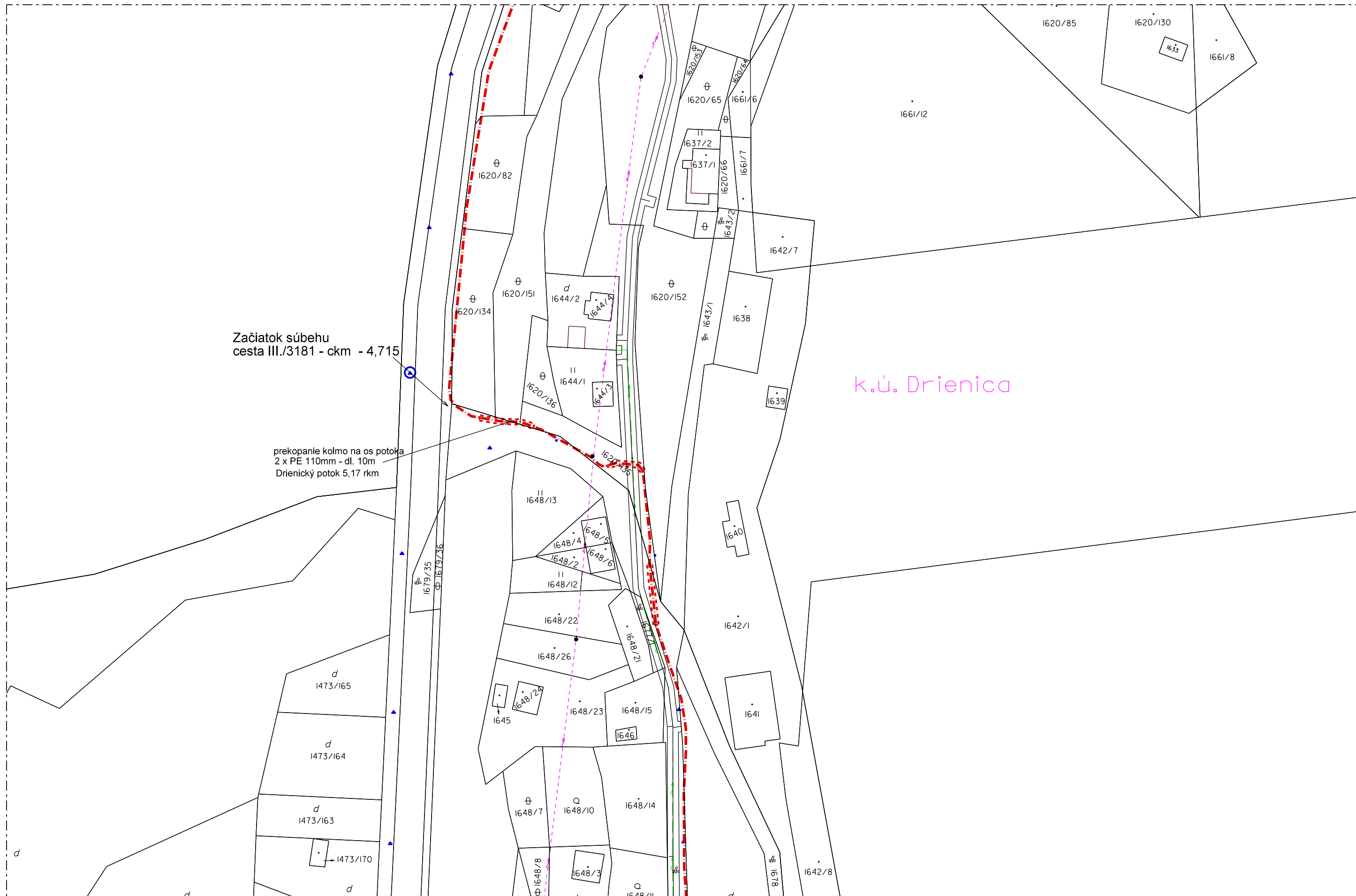
N.74



N.72



N.75

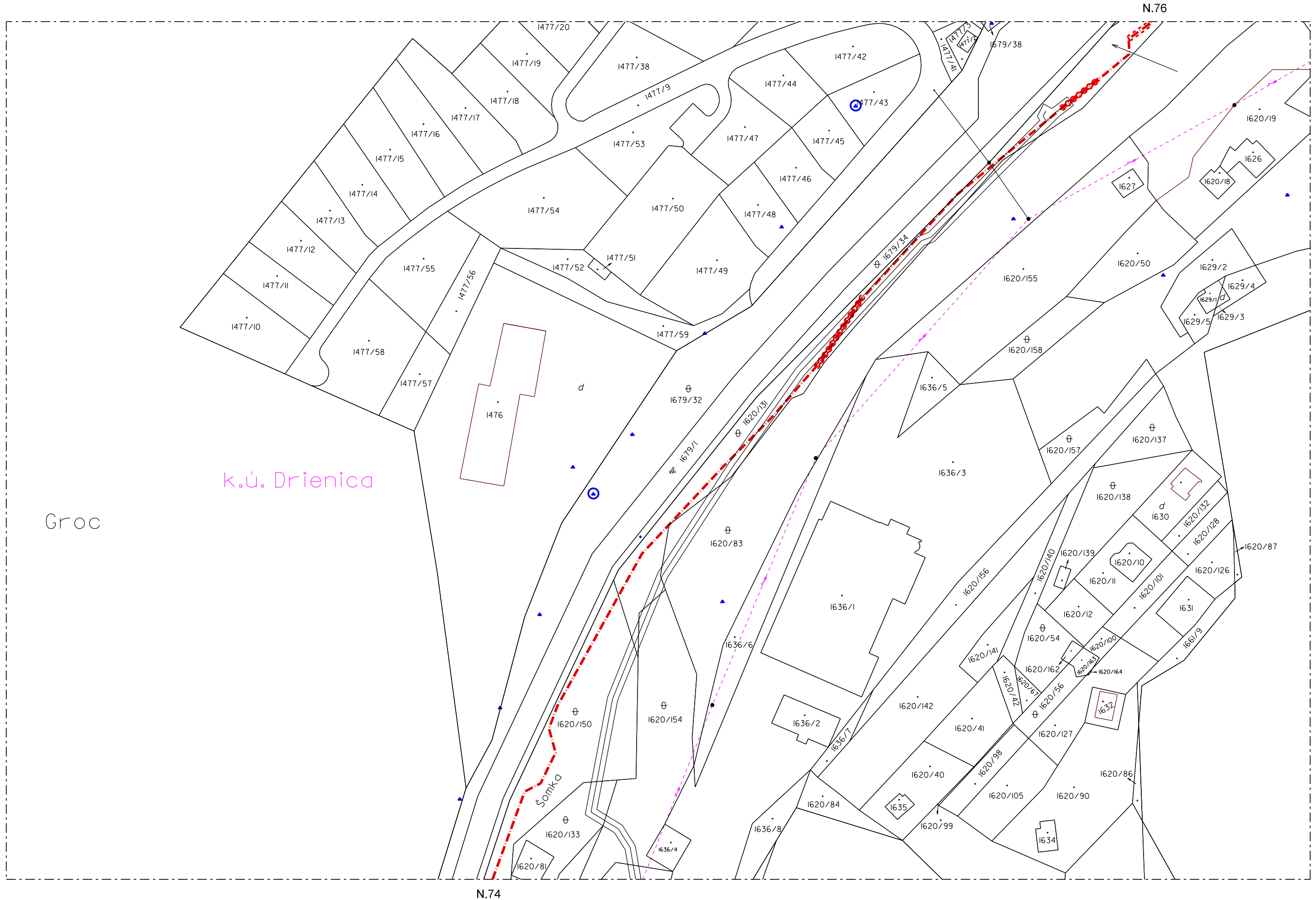


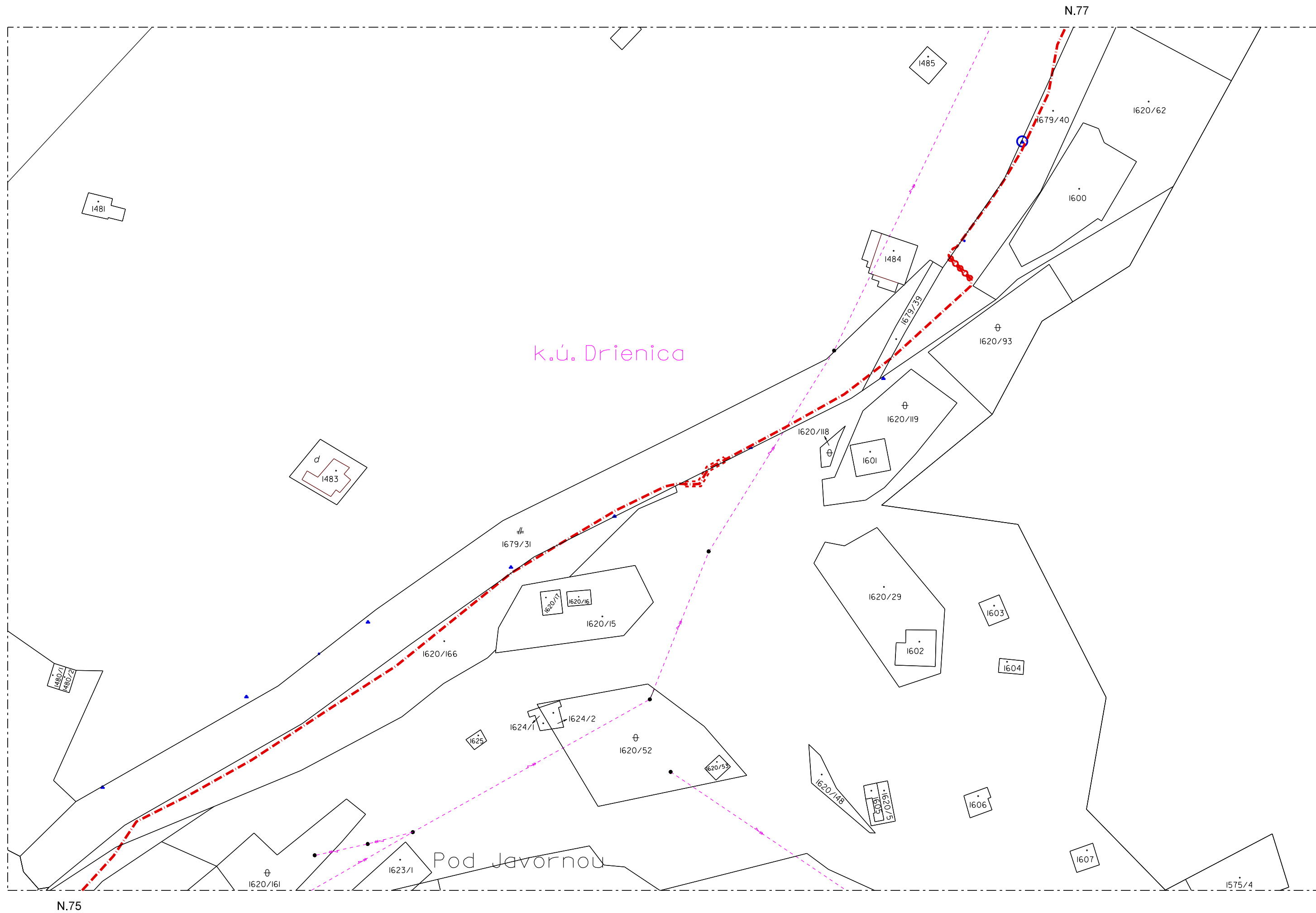
Začiatok súbehu
cesta III./3181 - ckm - 4,715

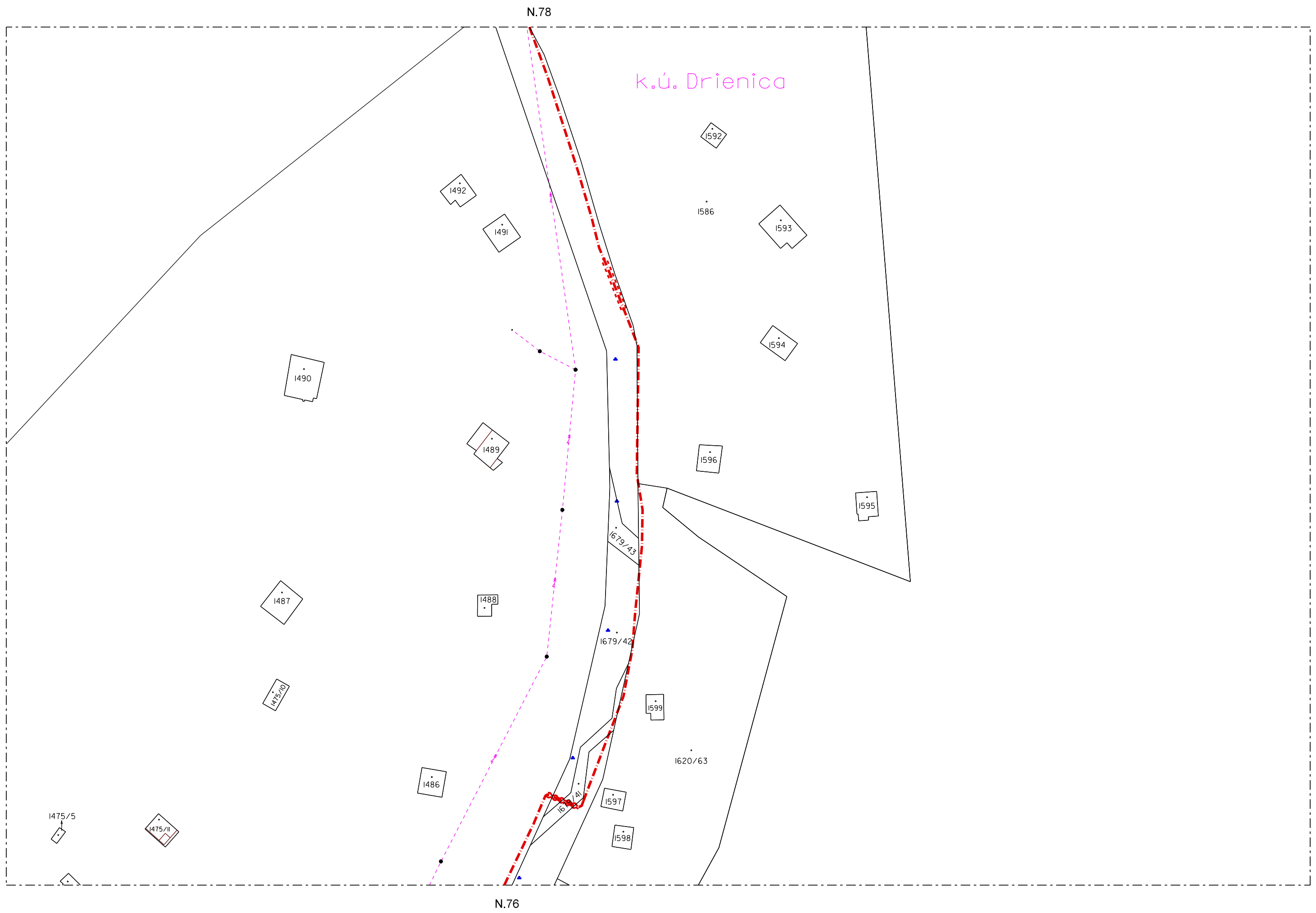
prekopanie kolmo na os potoka
2 x PE 110mm - dl. 10m
Drienický potok 5,17 rkm

k.ú. Drienica

N.73









N.79

1585

⊕
1493

1679/45

k.ú. Drienica

1587

1588

1586

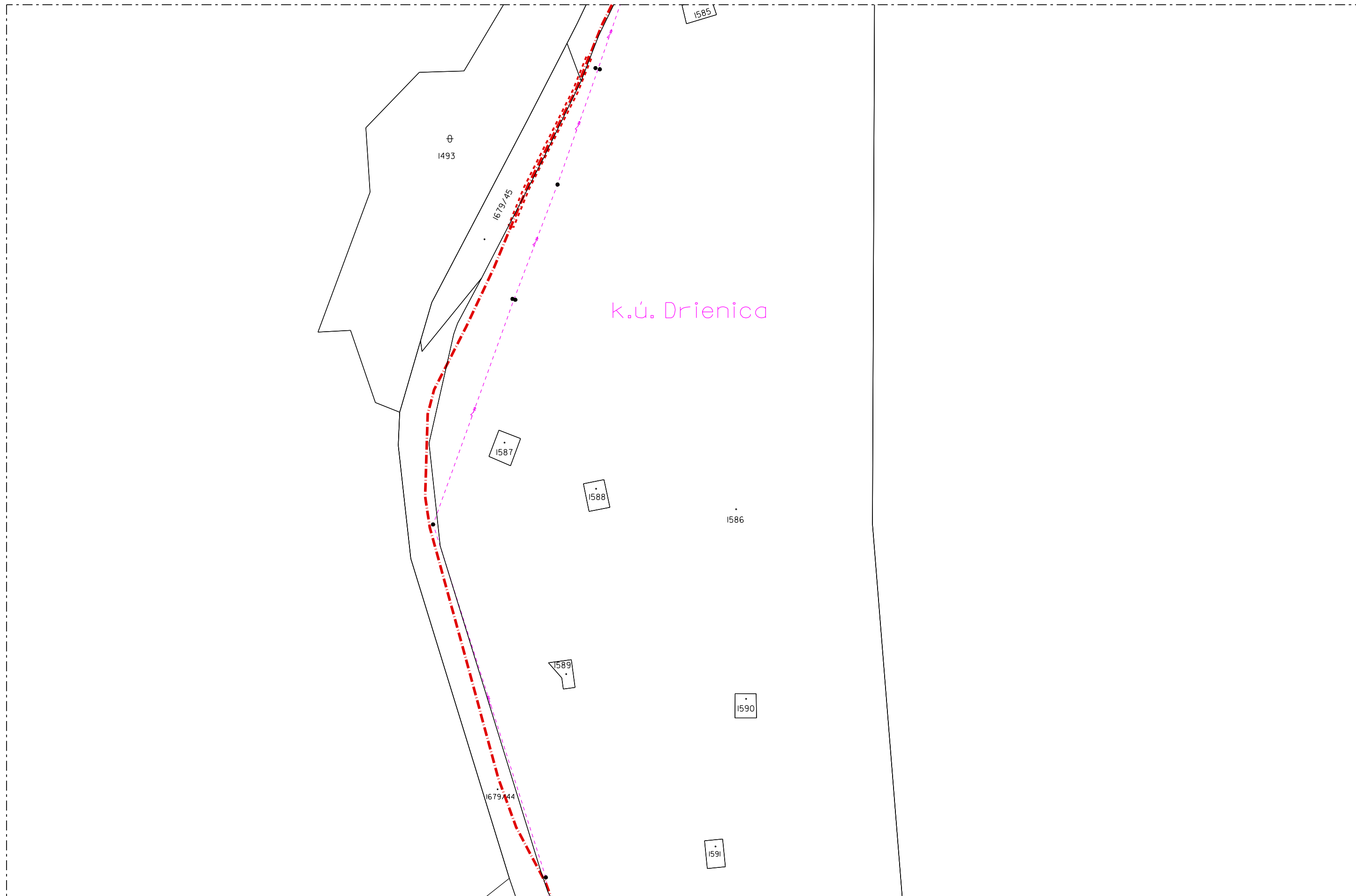
1589

1590

1679/44

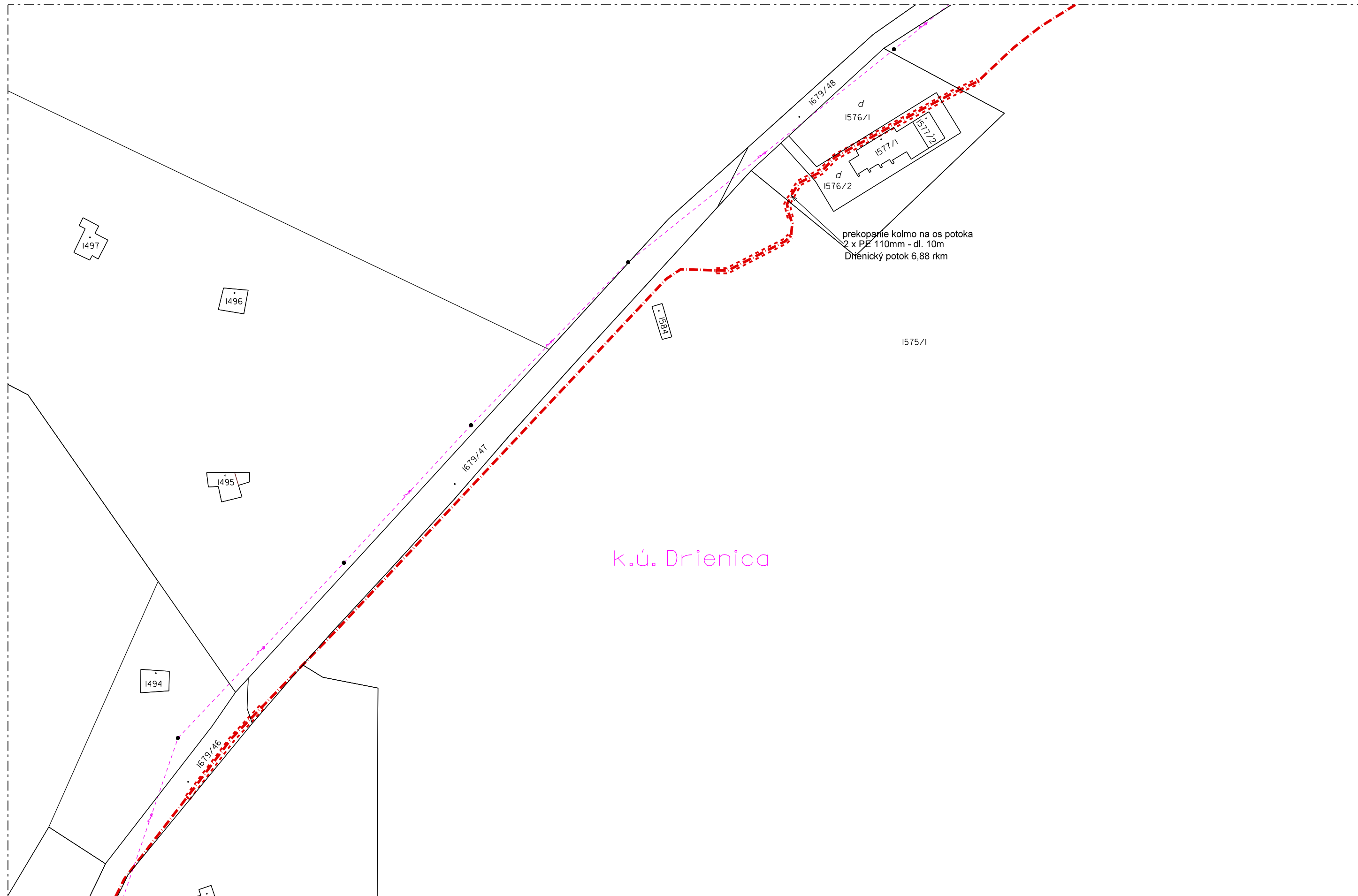
1591

N.77



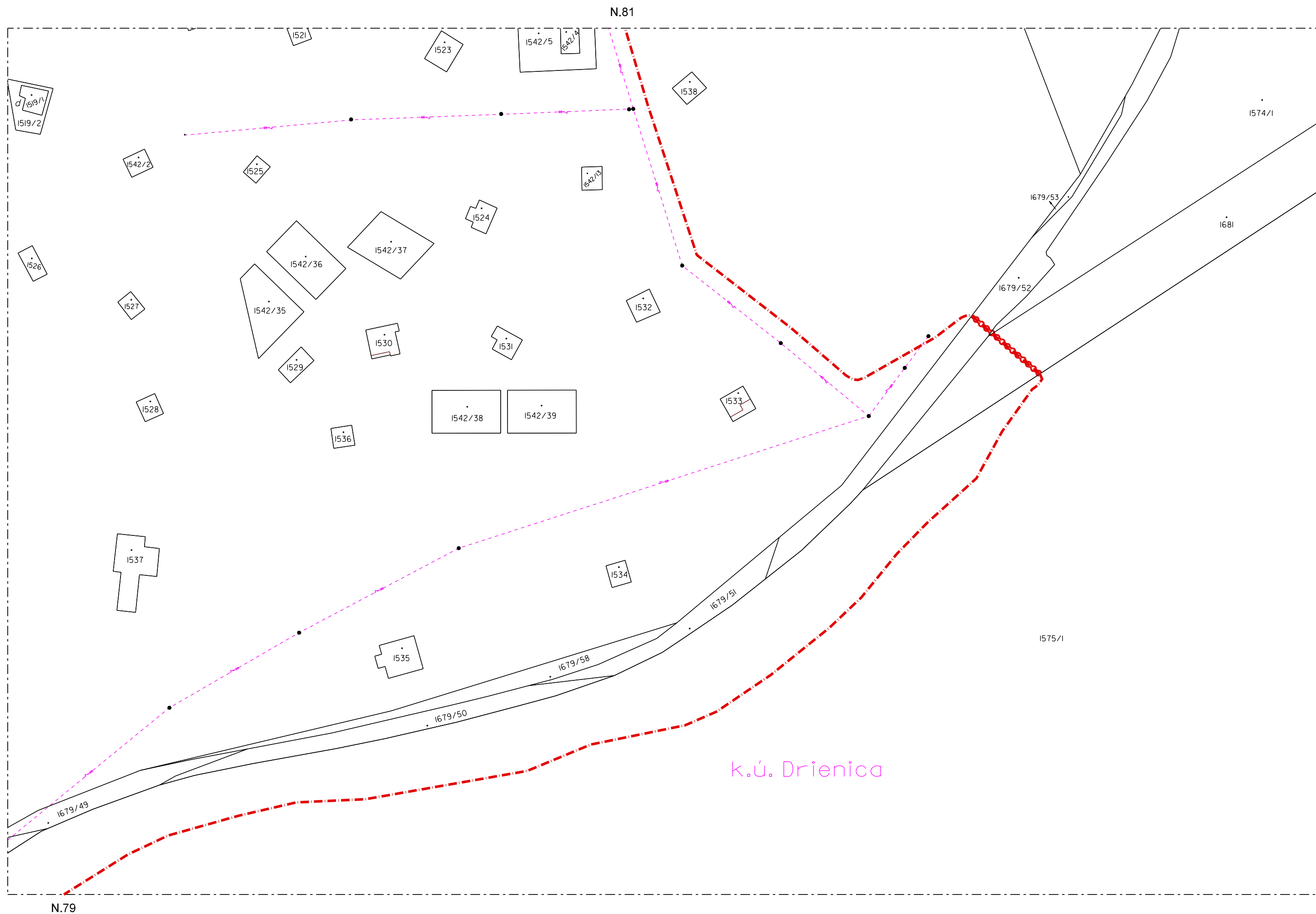


N.80



N.78

k.ú. Drienica





N.82

1679/52

k.ú. Drienica

1542/1

1542/6

1513/2
1513/1

1514

1542/15
1515

1541

1540

1517

1516

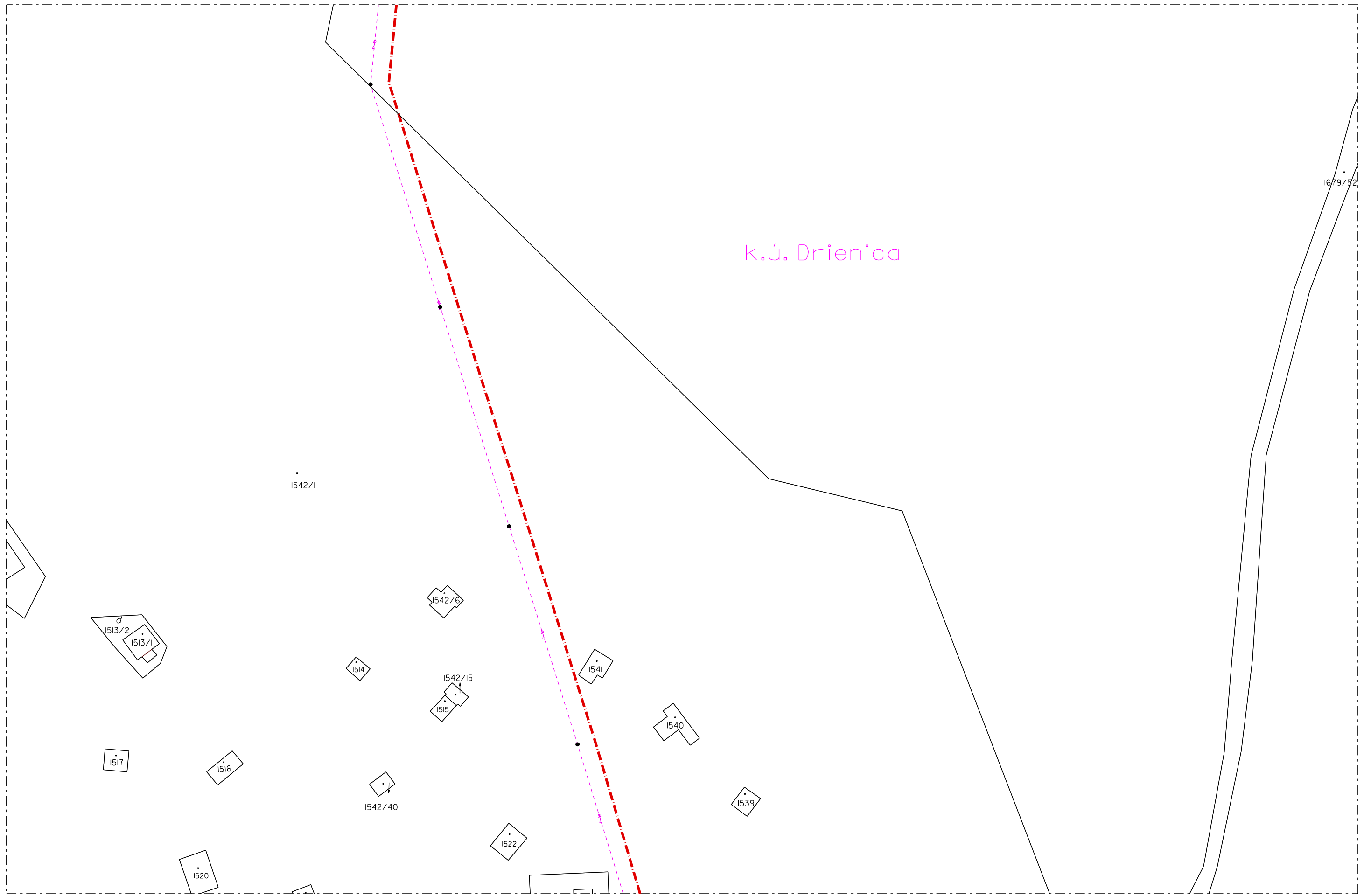
1542/40

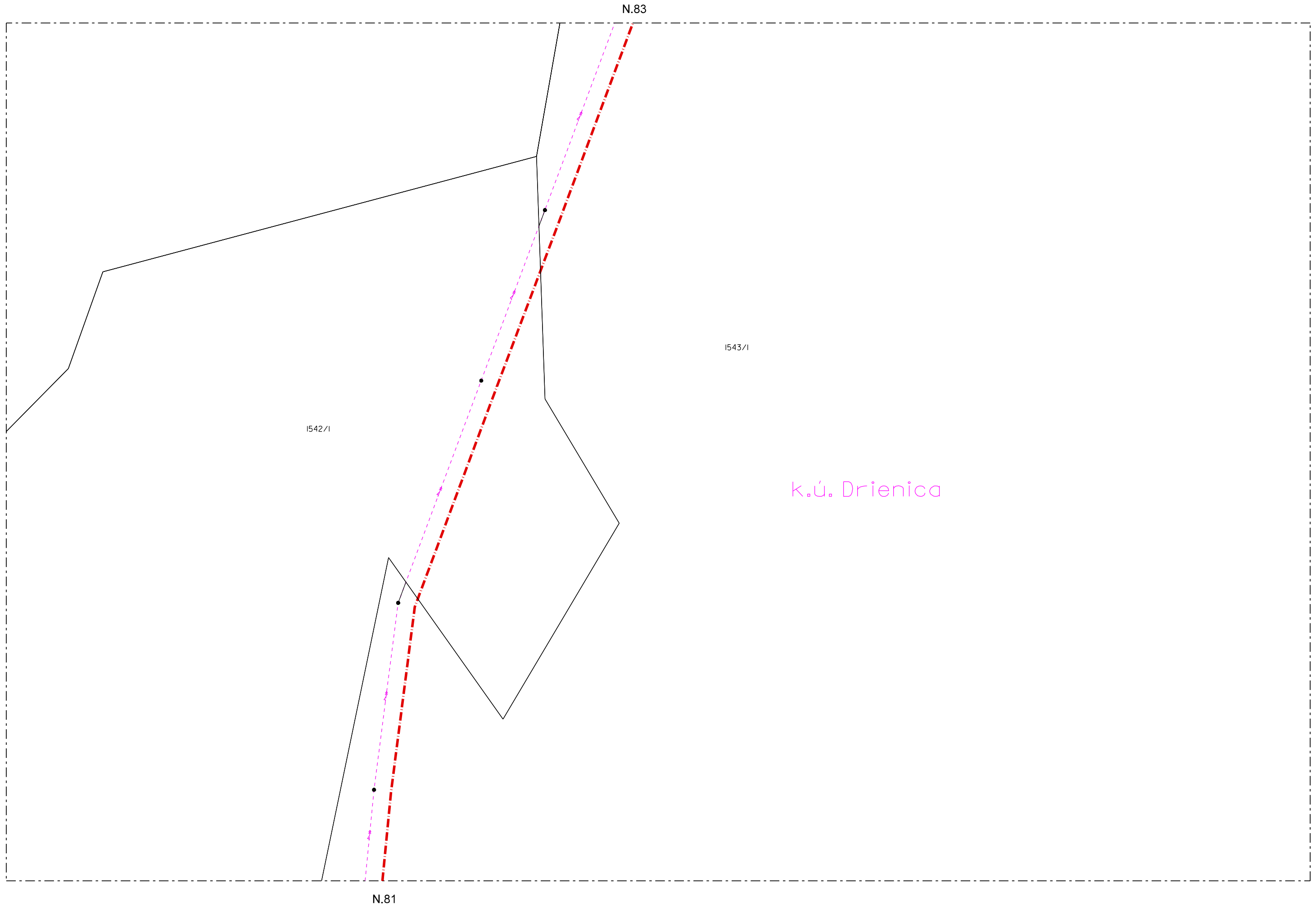
1539

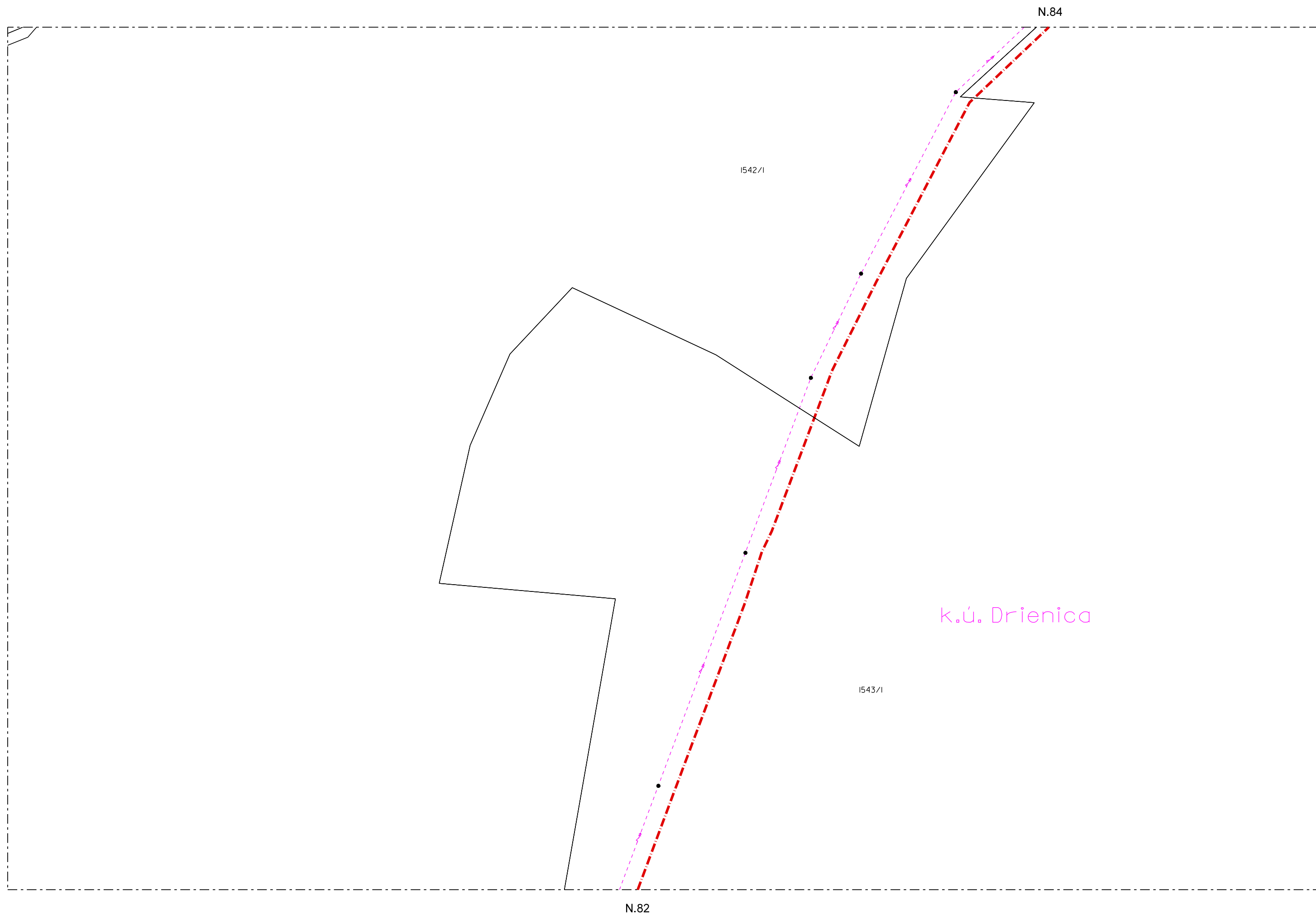
1520

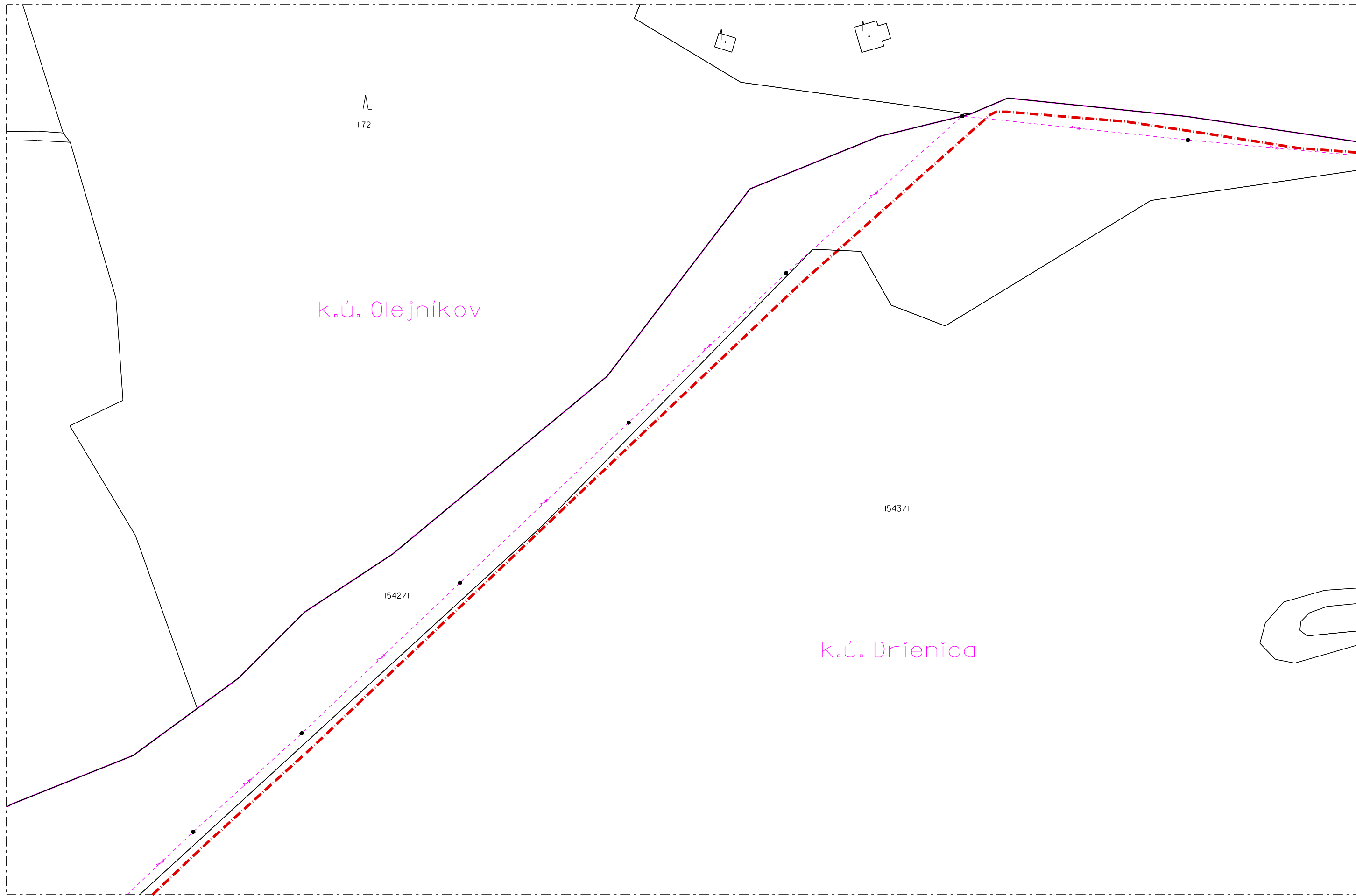
1522

N.80









1172

k.ú. Olejníkov

1542/1

1543/1

k.ú. Drienica

N.83

N.85



Lýžiar'ský vleč

1166

k.ú. Olejníkov

k.ú. Drienica

N.84

N.86

